

# Birchgrove Mill Hill Ayrton House



## Typical Three Bedroom

Flat Types: C100/C102/C104 Handed: C101/C103/C105

### Kitchen/Living/Dining:

14'0" x 26'10" / 4282 x 8178mm

**Bedroom 1:** 13'6" x 13'0"  
/ 4125 x 3973mm

**Bedroom 2:** 8'4" x 10'3"  
/ 2543 x 3128mm

**Bedroom 3:** 14'0" x 26'10"  
/ 2248 x 3247mm

**Bathroom:** 7'6" x 6'9"  
/ 2300 x 2050mm

Please note: Measurements are rounded up maximums and may vary from apartment to apartment.

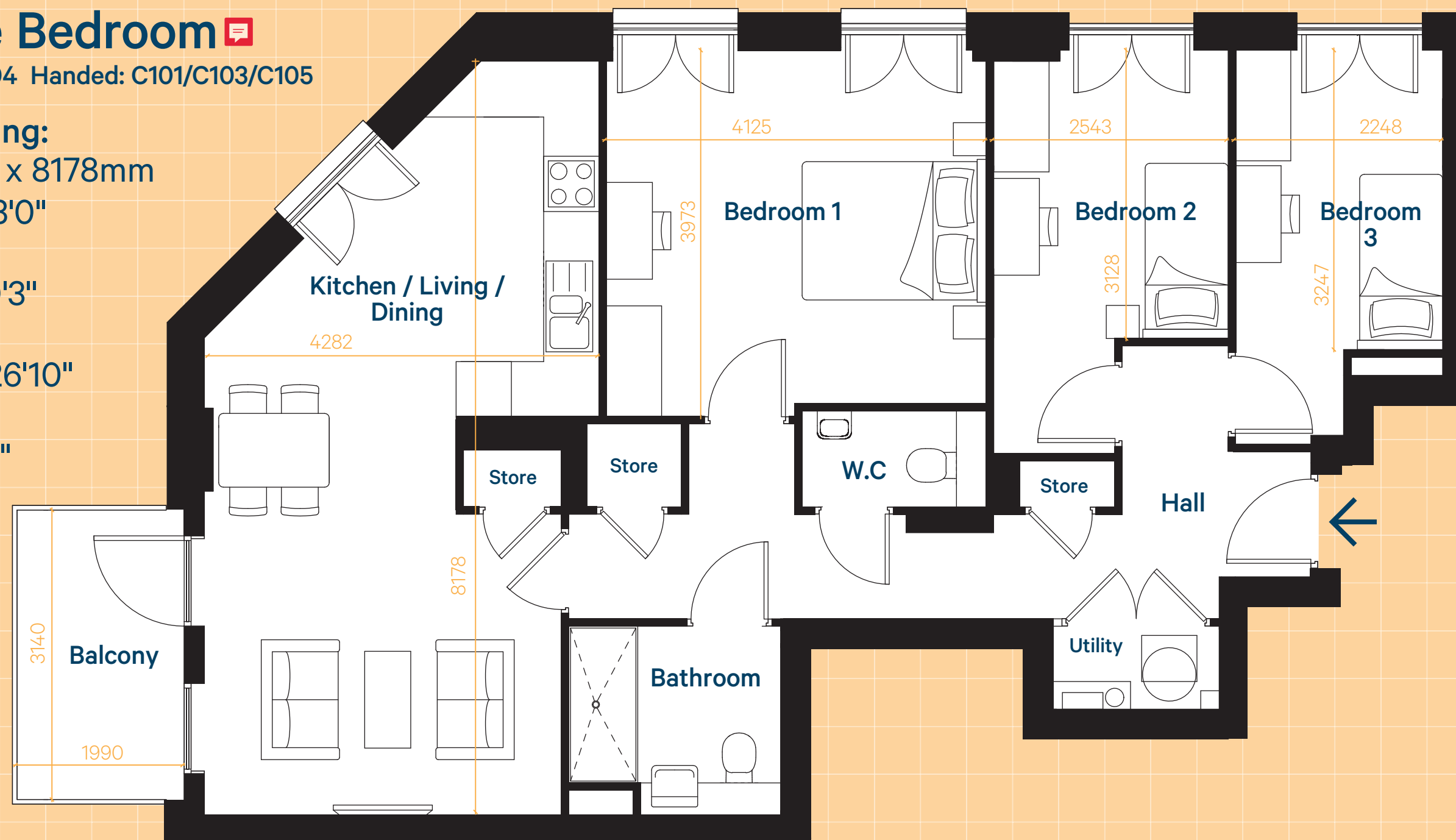
Layout as shown: 

Plots 523/2/5/10/14/18

Handed layout:

Plots 526/25/29/33/37/41

Upper floor apartments have balconies.



Internal areas:

85.1-89.5sqm

916-963sqft

0 0.5m 2m 5m Scale 1:50 @ A3

Please note: These floor plans are intended to give a general indication of the proposed layout only. Layouts and dimensions are not intended to form part of any contract or warranty. Apartments are let unfurnished.